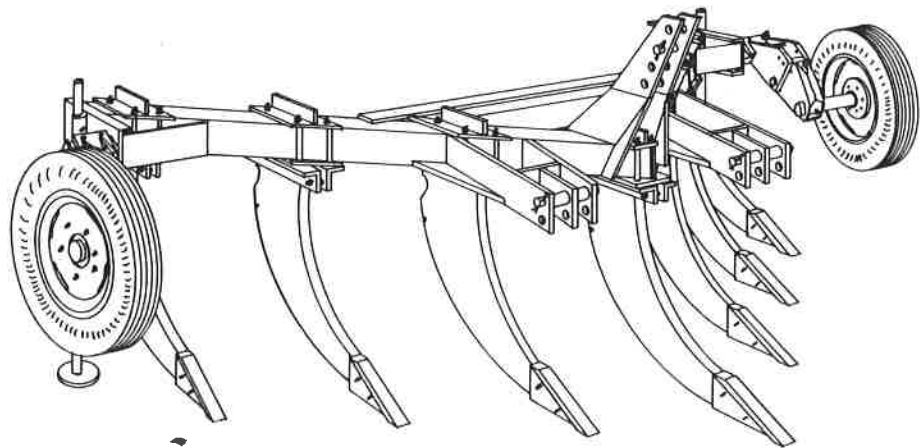


# LUNDELL

## 2150 DEEP TILL



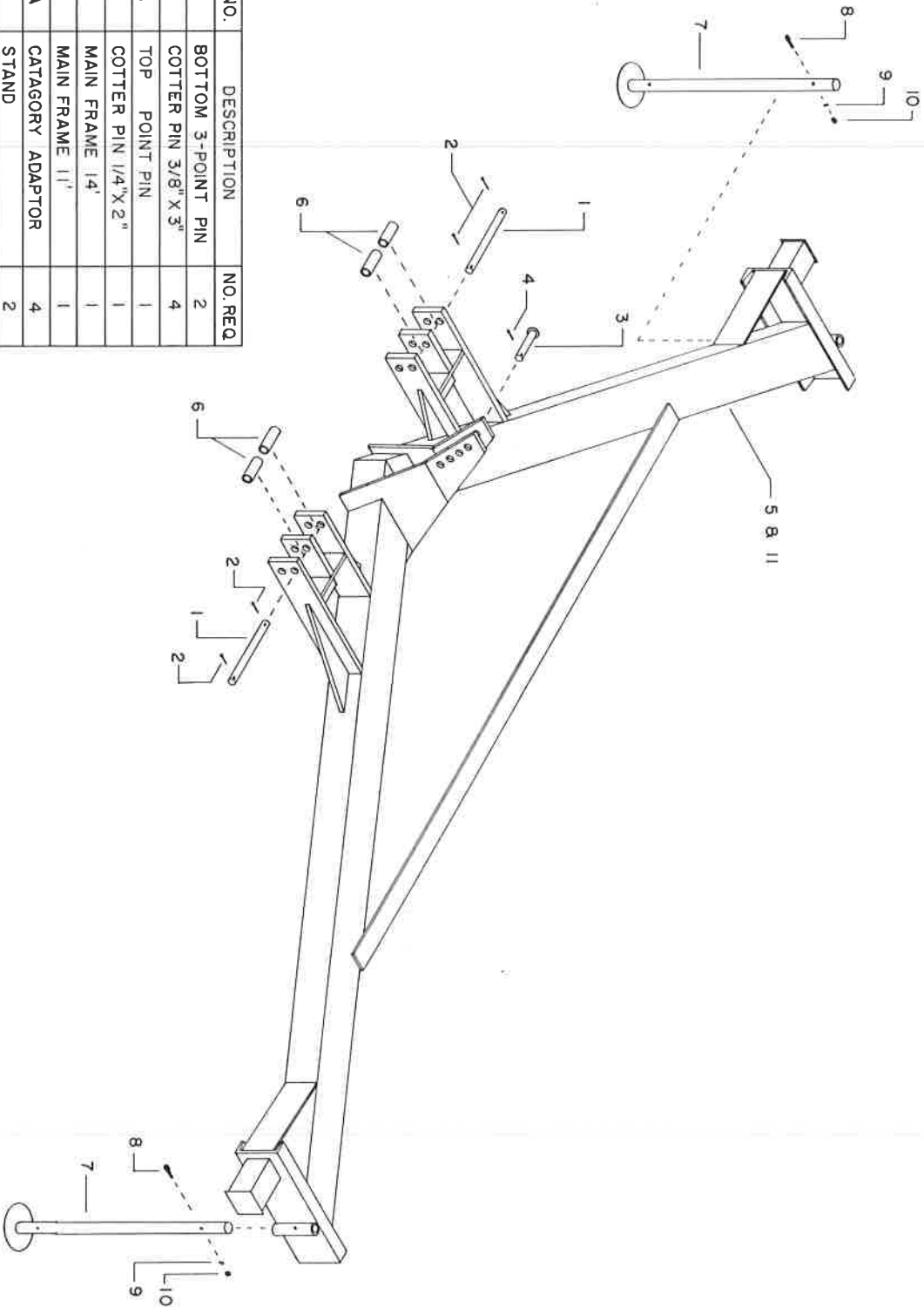
**OPERATORS MANUAL  
PARTS CATALOG**



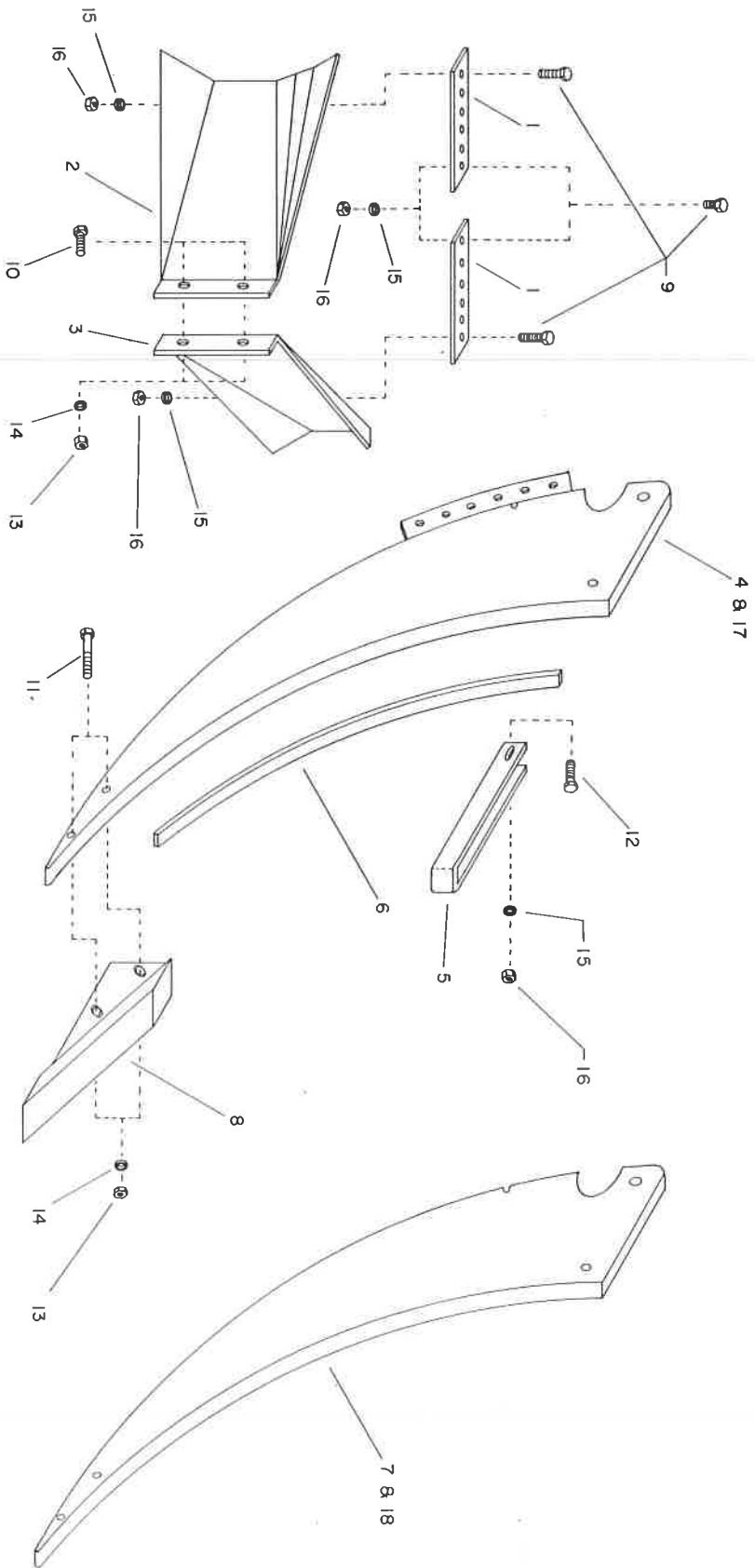
**MANUFACTURING COMPANY, INC.**

**CHEROKEE, IOWA**

REF. NO.	PART NO.	DESCRIPTION	NO. REQ.
1	7119A	BOTTOM 3-POINT PIN	2
2	X-811	COTTER PIN 3/8" X 3"	4
3	7256A	TOP POINT PIN	1
4	X-809	COTTER PIN 1/4" X 2"	1
5	7257C	MAIN FRAME 14'	1
11	7259C	MAIN FRAME 11'	1
6	6724A	CATEGORY ADAPTOR	4
7	7258A	STAND	2
8	X-225	CAP SCREW 1/2" X 2-1/2"	2
9	X-703	LOCKWASHER 1/2"	2
10	X-507	HEX NUT 1/2"	2



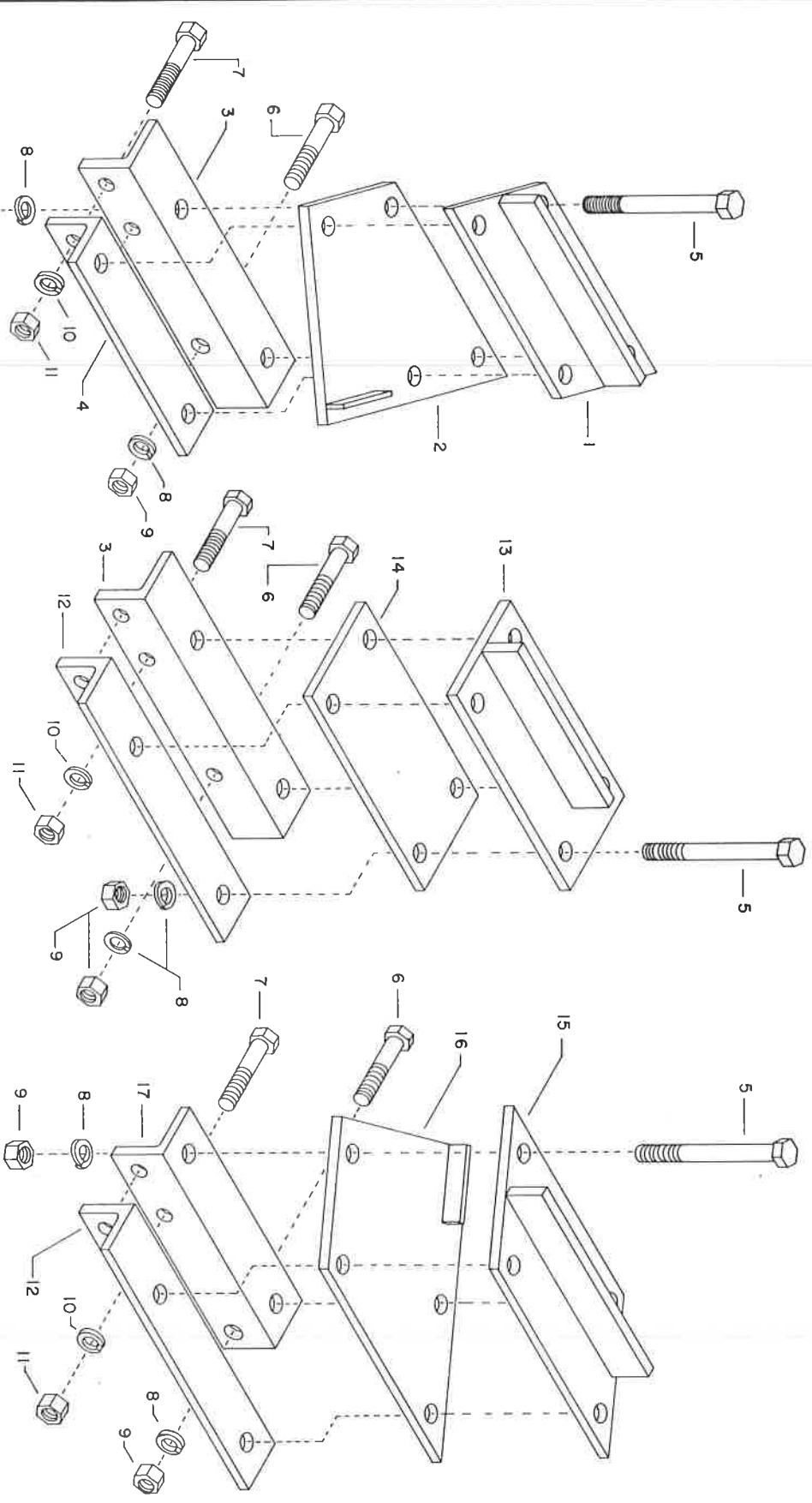
MAIN FRAME



REF. NO.	PART NO.	DESCRIPTION	NO. REQ.	REF. NO.	PART NO.	DESCRIPTION	NO. REQ.
1	6717A	ADJUSTABLE SPACER	11'	10	X-223	CAP SCREW 1/2"X1 1/2"	14
2	7291A	RIGHT RIDGER ASS'Y	OPT.	11	X-225	CAP SCREW 1/2"X2 1/4"	18
3	7290A	LEFT RIDGER ASS'Y	OPT.	12	X-219	CAP SCREW 3/8"X2 1/2"	OPT.
4	7280C	26" TOOTH WITH HOLDER	OPT.	13	X-507	HEX NUT 1/2"	14
5	7287A	WEAR BAND RETAINER	OPT.	14	X-703	LOCKWASHER 1/2"	14
6	7288A	WEAR BAND	OPT.	15	X-702	LOCKWASHER 3/8"	OPT.
7	7279C	26" TOOTH	OPT.	16	X-503	HEX NUT 3/8"	OPT.
8	7283A	SHOE ASS'Y	7	17	7282C	32" TOOTH WITH HOLDER	OPT.
9	X-211	CAP SCREW 3/8"X3/4"	OPT.	18	7281C	32" TOOTH	OPT.

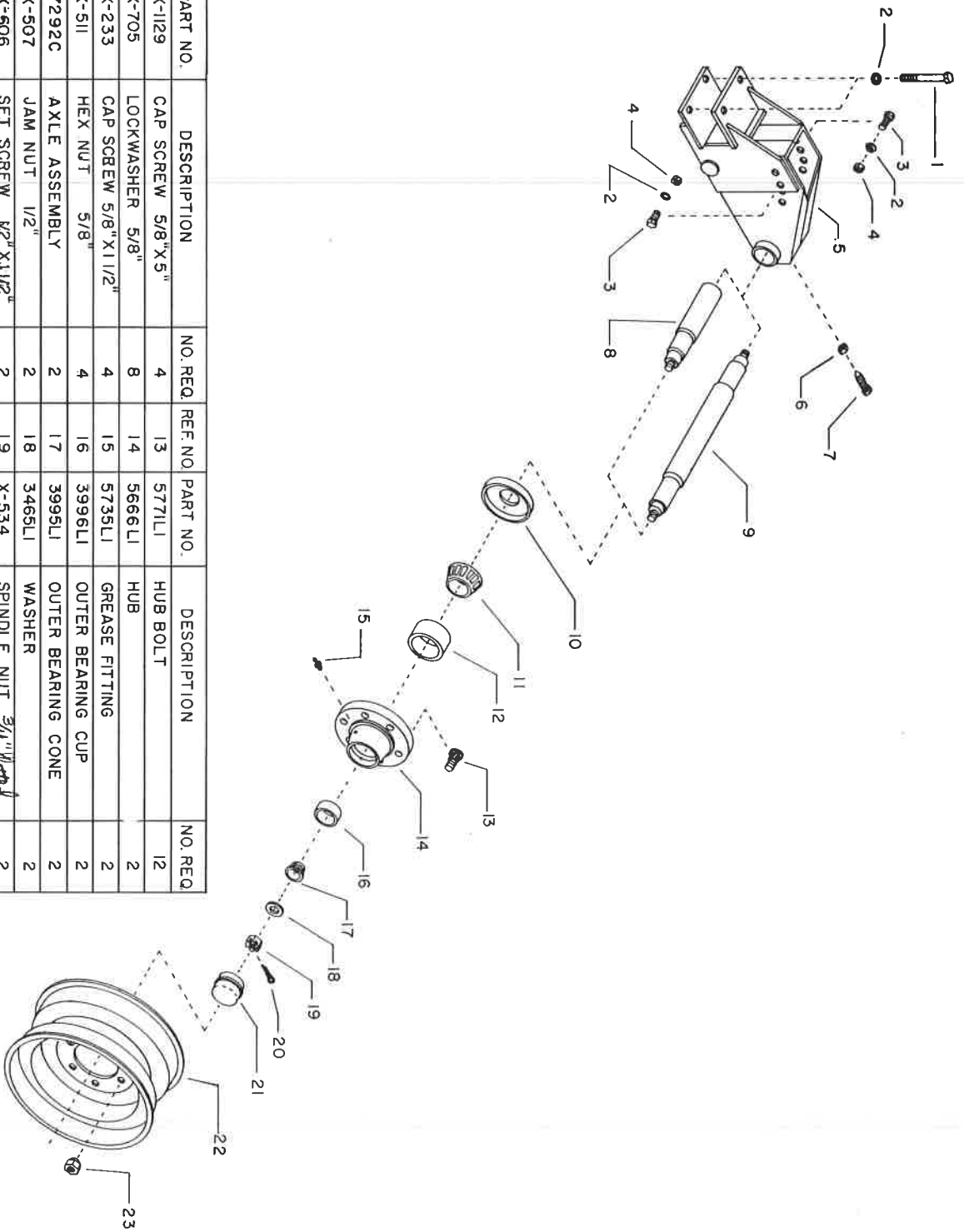
TOOTH ASSEMBLY

ASSEMBLY OF THE TOOTH ASSEMBLY



REF. NO.	PART NO.	DESCRIPTION	NO. REQ.	REF. NO.	PART NO.	DESCRIPTION	NO. REQ.
1	7269A	TOP PLATE RIGHT	3	4	10	LOCKWASHER 5/8"	14
2	7268A	BOTTOM PLATE RIGHT	3	4	11	HEX NUT 5/8"	14
3	7273A	TOOTH HOLDER NO. 4	4	5	12	TOOTH HOLDER NO. 1	4
4	7274A	TOOTH HOLDER NO. 3	3	4	13	TOP CENTER PLATE	1
5	X-1126	CAP SCREW 3/4" X 7-1/2"	28	36	14	BOTTOM CENTER PLATE	1
6	X-1127	CAP SCREW 3/4" X 3-1/2"	7	9	15	TOP PLATE LEFT	3
7	X-1128	CAP SCREW 5/8" X 3-1/2"	14	18	16	BOTTOM PLATE LEFT	3
8	X-708	LOCKWASHER 3/4"	35	45	17	TOOTH HOLDER NO. 2	3
9	X-515	HEX NUT 3/4"	35	45			4

TOOTH PLATES



REF. NO.	PART NO.	DESCRIPTION	NO. REQ.	REF. NO.	PART NO.	DESCRIPTION	NO. REQ.
1	X-1129	CAP SCREW 5/8"X5"	4	13	577LI	HUB BOLT	12
2	X-705	LOCKWASHER 5/8"	8	14	5666LI	HUB	2
3	X-233	CAP SCREW 5/8"X1 1/2"	4	15	5735LI	GREASE FITTING	2
4	X-511	HEX NUT 5/8"	4	16	3996LI	OUTER BEARING CUP	2
5	7292C	AXLE ASSEMBLY	2	17	3995LI	OUTER BEARING CONE	2
6	X-507	JAM NUT 1/2"	2	18	3465LI	WASHER	2
7	X-606	SET SCREW 1/2"X1 1/2"	2	19	X-534	SPINDLE NUT <i>3/4" thread</i>	2
8	5960A	SPINDLE (SINGLE WHEEL)	2	20	X-807	COTTER PIN	2
9	5961A	SPINDLE (TANDEM)	OPT. 2	21	3999LI	GREASE CAP	2
10	3044LI	GREASE SEAL	2	22	3039LI	WHEEL 15"X6" - 6 BOLT	2
11	3043LI	INNER BEARING CONE	2	23	X-509	LUG NUT	12
12	3041LI	INNER BEARING CUP	2				

AXLE ASSEMBLY

Copyright © 1997, General Motors